

Restrictive Valve and Restrictive Check Valve

Model: MG/MK...1XJ



- ◆ Size 6 to 30
- ◆ Maximum working pressure 350 bar
- ◆ Maximum working flow 400 L/min

Contents

Function description, sectional drawing	02
Models and specifications	02
Functional symbols	03
Technical parameters	03
Characteristic curve	04
Component size	05

Features

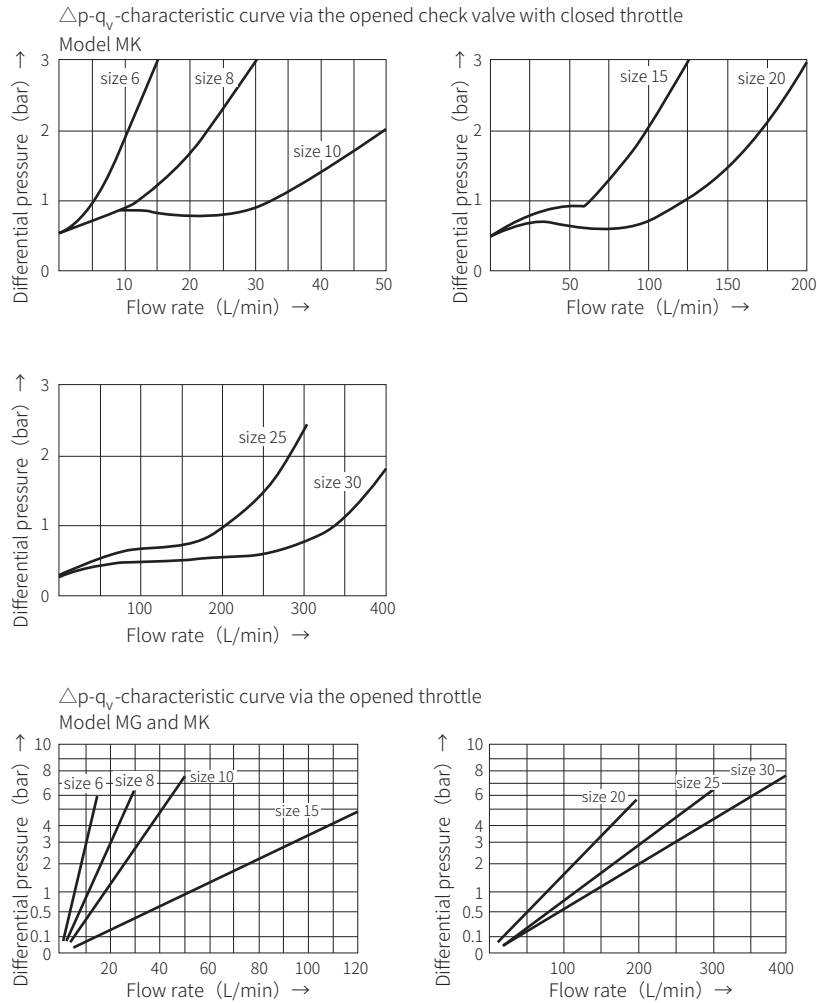
- Suitable for direct in-line mounting
- Performance depends on pressure and viscosity

Any part of this brochure can not be reproduced, edited, copied and disseminated electronically in any way without authorization of Jiayite Hydraulics company. As the product is in constant development and innovation, the information in this brochure is not specific to the special conditions or applicability of a specific industry, thus Jiayite Hydraulics company is not responsible for any incomplete or inaccurate description generated.



Characteristic curve

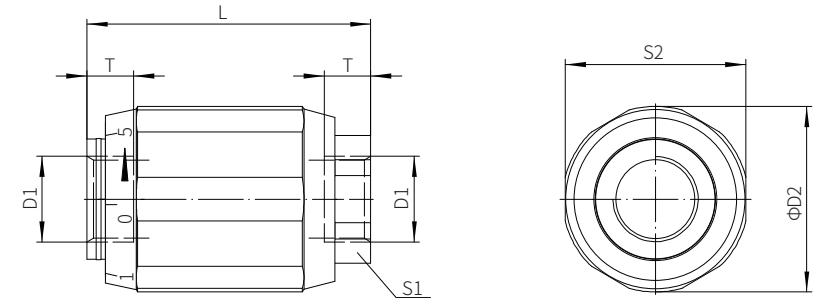
(Measured when using HLP 46, $t_{oil} = 40^{\circ}\text{C} \pm 5^{\circ}\text{C}$)



Component size

Size unit: mm

Model MK and MG



Size	D1		D2	L1	S1	S2	T1
	G	Metric					
6	G1/4	M14×1.5	34	65	22	32	12
8	G3/8	M18×1.5	38	65	24	36	12
10	G1/2	M22×1.5	48	80	30	46	14
15	G3/4	M27×2	58	100	41	55	16
20	G1	M33×2	72	110	46	70	18
25	G1 1/4	M42×2	87	130	55	85	20
30	G1 1/2	M48×2	93	150	60	90	22