

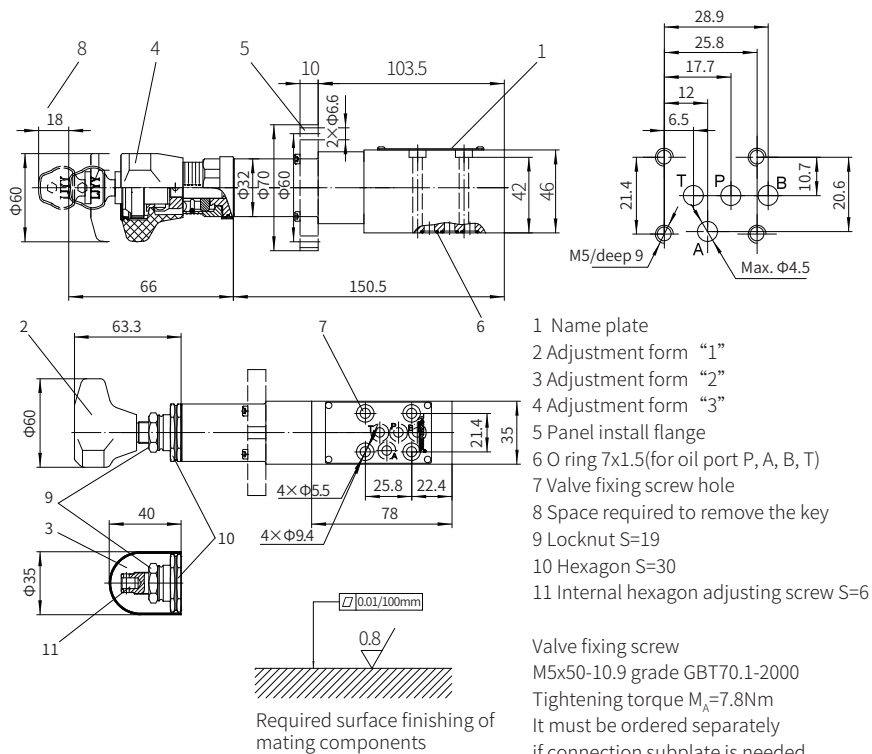
## Technical parameters

Inlet pressure port P, B(X)	bar	up to 210, without check valve up to 315
Outlet pressure (port A)	bar	to 315
Backpressure port T(Y)	bar	to 60
Maximum flow	L/min	to 30
Medium		Mineral hydraulic oil or phosphate hydraulic oil
Viscosity range	mm <sup>2</sup> /s	10 to 800
Working medium temperature range °C		-30 to +80 (NBR seal) ; -20 to +80 (FKM seal)
Cleanliness of oil		The maximum allowable pollution level of oil is ISO4406 Class 20/18/15

## Component size

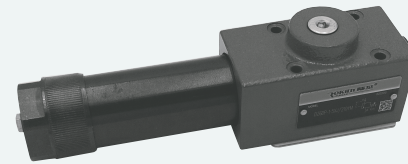
Size unit: mm

Model DZ5DP...1XJ



## Direct Operated Pressure Sequence Valve

Model: DZ6DP...5XJ



- ◆ Size 6
- ◆ Maximum working pressure 315 bar
- ◆ Maximum working flow 60 L/min

## Contents

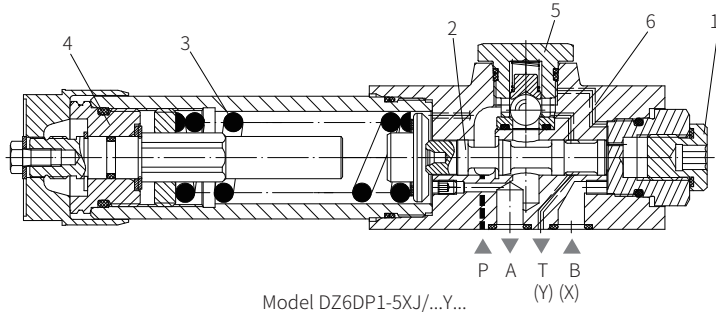
Function description, sectional drawing	02
Models and specifications	02
Functional symbols	03
Technical parameters	03
Characteristic curve	04
Component size	05

## Features

- Subplate mounting
- 5 pressure ranges
- 2 adjusting elements
- Rotary knob
- Adjusting screw with protective cap
- Check valve, optional

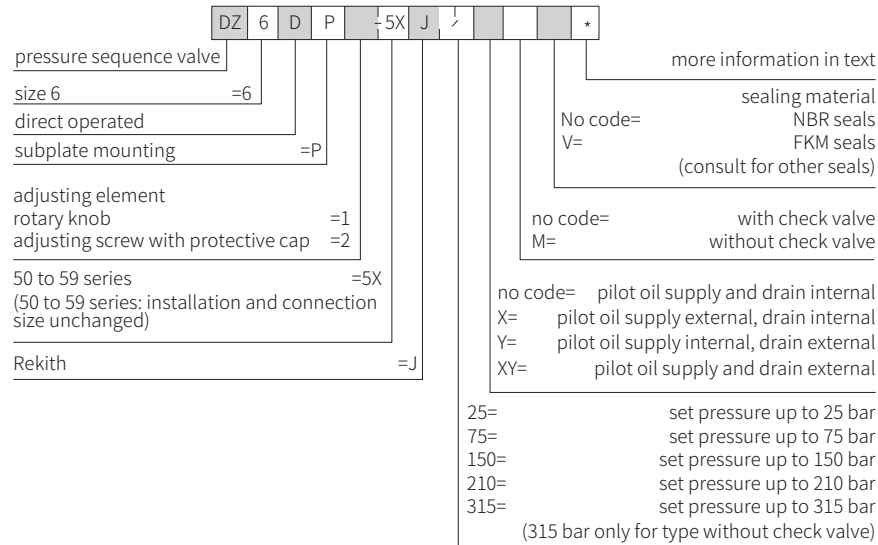
**Function description, sectional drawing**

The DZ6DP valve is direct operated sequence valve, it is used for sequence switching of the secondary circuit pressure. The sequence pressure is setting via the adjusting element (4). The spring (3) holds control spool (2) in initial position, the valve is closed. The pressure in port P acts on the piston area of the control spool (2) via the control line (6) at the opposite of the spring (3). When the pressure in port P reaches the setting value of spring (3), the control spool (2) moves to the left to connect port P and port A, the pressure in port P not fall. The control signal is obtained from port P internally via the control line (6) or externally via port B (X). Depending on the application of the valve, the leakage oil can return externally through port T (Y) or internally through port A. Notice: For internal drainage, the set opening pressure increases the pressure in port A. The fluid can flow freely from port A to port P via installing check valve (5). Pressure gauge connection(1) is used to monitor the set sequential pressure.

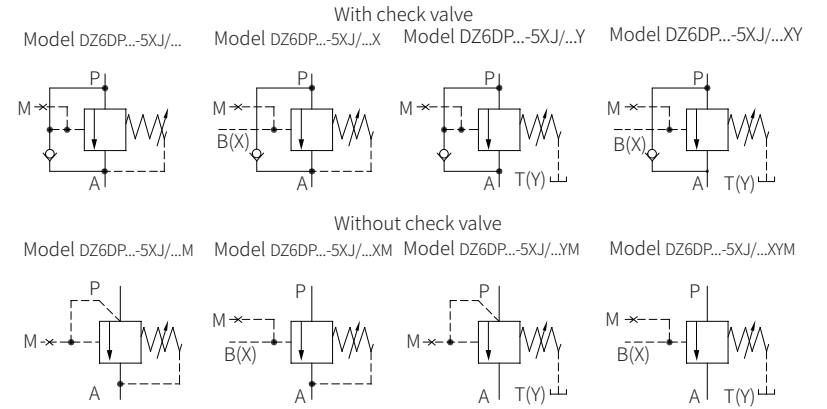


Model DZ6DP1-5XJ/...Y...

**Models and specifications**



**Functional symbols**



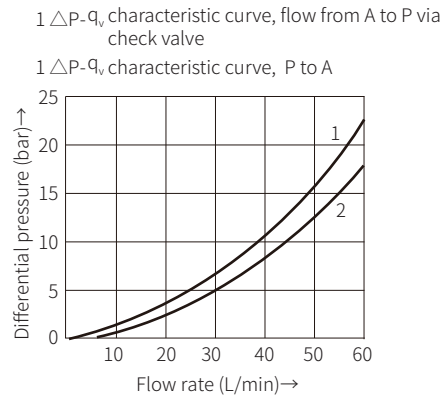
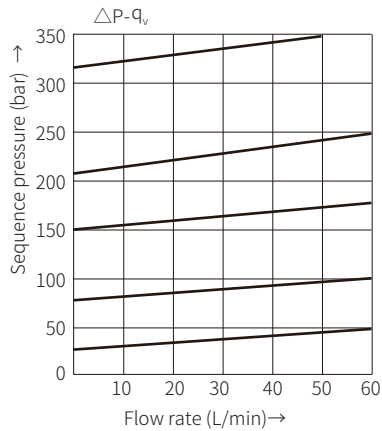
**Technical parameters**

Overview		
Installation position		Optional
Environment temperature range		-30 to +50 (NBR seal) -20 to +50 (FKM seal)
Weight	kg	1.2KG
Hydraulic		
Maximum working pressure	Port P, A, B (X) bar	315
Maximum secondary pressure	Port T(Y) bar	25; 75; 150; 210; 315
Maximum flow	L/min	60
Medium		Mineral oil (HL, HLP) <sup>1)</sup> in accordance with DIN 51524; Fast living organisms degraded oil according to VDMA 24568; HETG (Rapeseed oil) <sup>1)</sup> ; HEPG(Polyethyleneglycol) <sup>2)</sup> ; HEES (Synthetic Fats) <sup>2)</sup>
Hydraulic oil temperature range	°C	-30 to +80 (NBR seal) -20 to +80 (FKM seal)
Viscosity range	mm <sup>2</sup> /s	10 to 800
Cleanliness of oil <sup>3)</sup>		The maximum allowable pollution level of oil is ISO4406 Class 20/18/15

- 1) For NBR seal and FKM seal.
- 2) Only for FKM seal.
- 3) The oil must meet the cleanliness degree requested by the components in the hydraulic system. Effective oil filtration can prevent failure and increase the service life of the components.

## Characteristic curve

(Measured when using HLP46,  $\nu_{oil}=40^{\circ}\text{C} \pm 5^{\circ}\text{C}$ )

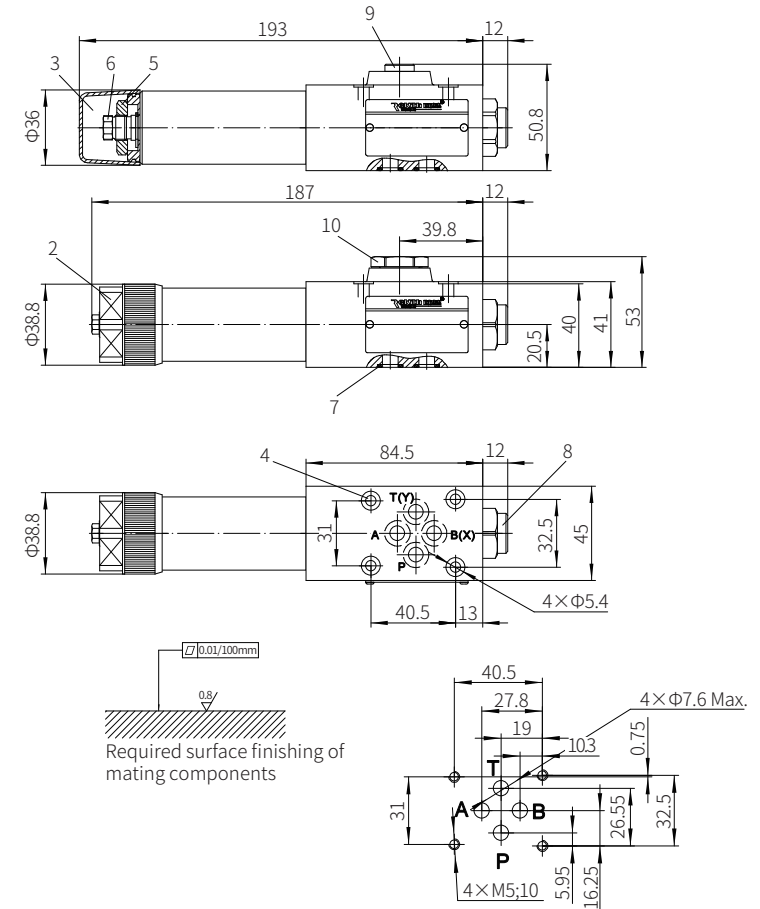


The characteristic curves are valid for an outlet pressure = 0 over the entire flow range!

## Component size

Size unit: mm

Model DZ6DP...-5XJ/...



- 1 Name plate
- 2 Adjustment form "1"
- 3 Adjustment form "2"
- 4 Valve fixing screw hole
- 5 Locknut S=24
- 6 Internal hexagon adjusting screw S=10
- 7 O ring 9.25x1.78 ( for oil port P, A, B, T)
- 8 Pressure gauge connection: G1/4 or M14x1.5; 12 deep
- 9 Without check valve
- 10 With check valve

Valve fixing screw  
M5-10.9 grade GB/T70.1-2000  
Tightening torque  $M_A=7.8\text{Nm}$   
It must be ordered separately  
if connection subplate is needed.  
Subplate model:  
G341/01 (G1/4"); G341/02 (M14x1.5)  
G342/01 (G3/8"); G342/02 (M18x1.5)  
G502/01 (G1/2"); G502/02 (M22x1.5)